

THE DETAILS

This is a structured 4-week Sketchbook course, held every Tuesday in June at Leeds Castle, in Kent.

Tuesday 4th, 11th, 18th and 25th of June.
10.30 am-1.30 pm

Suitable for beginners to intermediate-level artists wanting to experiment with expressive observational drawing.

There will be a maximum of 8 people in a class.

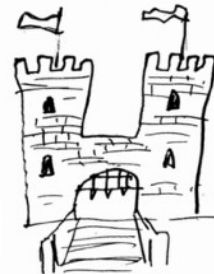


Tutorial Fee £100 per person for 4 classes and 4 weeks of online support.
Payable in advance by bank transfer or PayPal.

Entry Fee to the castle is from **£31.50**

For 1 year unlimited entry.
Payable to Leeds Castle online or at the ticket office.
www.leeds-castle.com

Each week we will focus on a new area of study, including:
Tone & value
Composition
Mark-making
Colour



You will follow your interest in choosing what to draw each week. There's a wide variety to draw, from historic buildings, stunning scenery and flowers and plants to their falconry birds.

You will receive a personal tutorial each week, demonstrations, and group feedback sessions.
You will also receive weekly emails with tips and tricks and advice for the forthcoming workshop.

The workshop is held outside on the grounds of Leeds Castle. You will need to be prepared for all weathers, however, there is some cover for heavy rain, or we could retreat to the castle.

An itinerary will be sent to you after registration.

To register please email:

heidigriffithsart@outlook.com

This workshop is NOT associated with or affiliated by
Leeds Castle.

THE VENUE

The beautiful Leeds Castle is nestled in the Kent countryside.
It is accessible by public transport links and has a large car park.

There's plenty to draw within the grounds and cafes and toilets are available.
There will be a fair bit of walking involved on the day.

Please see their website for more information on the venue:
www.leeds-castle.com

We will be drawing outside so be prepared for all weather.
In heavy rain, we may wish to draw within the castle or shelter
In the grounds.

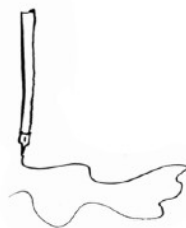
WHAT WILL I NEED?

You will need an A4 sketchbook,
Pencils & pens.
(Whatever you like to draw with!).

It is helpful to bring some watercolour pans if you have them.
There will also be additional materials for you to try at the workshop.

A full list of on-location kits will be sent out on registration.

Additionally maybe some waterproof clothing and something to sit on. A plastic bag would be fine.



WHAT IS OBSERVATIONAL DRAWING?

In simple terms, observational drawing is drawing what is in front of you.

To draw what you see.



Van Gogh Observational drawing.



Matisse Observational drawing.

However, learning to observe is a skill in itself. Drawing on location is fantastic for bringing all your senses to paper. You will see, hear, and feel the world in greater depth.

Deciding what to draw and what to leave out is tricky. Can you create the right atmosphere? And A Successful Composition?

The start of most visual artistic endeavours has its roots in observational drawing. You will be guided into tackling these challenges and more in the workshop.



David Hockney Observational Drawing

WHAT ARE EXPRESSIVE & EXPERIMENTAL TECHNIQUES?

You will not be required to draw from observation in a hyper-realistic way. Heidi is an expressive artist, focusing on shapes, texture and mark-making to represent the world around her.

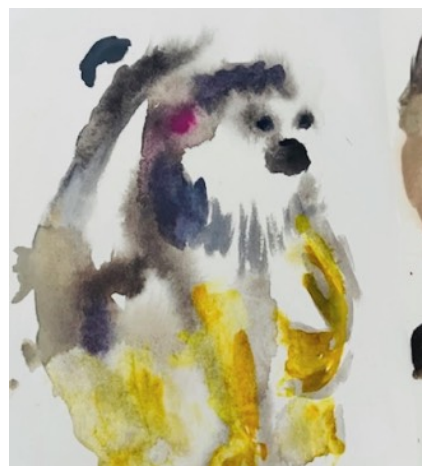
We will be experimenting with different materials and doing fast-timed drawings which improves hand-eye co-ordination.

Heidi will also talk you through activities that will help you to loosen up your technique, and remove the creative anxieties we tend to have before embarking on artwork.

See the images below for examples of Heidi's sketchbook work;



Expressive Sketchbook techniques
Heidi griffiths 2023-24



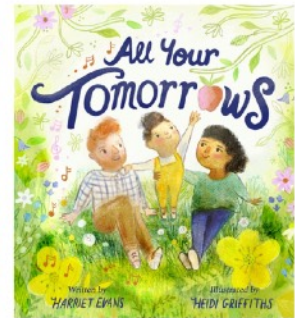
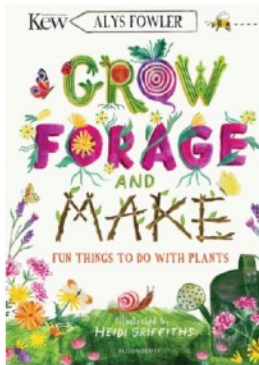
WHO IS THE TUTOR?

Heidi Griffiths is an Artist and Illustrator living and Working in Maidstone Kent.

She has over 12 years of experience as a working mixed-media artist. Heidi has illustrated four children's books published by Bloomsbury, Quarto and Little Tiger.



She has had her work featured in various international magazines and exhibits her illustrations in galleries around the Southeast as well as selling her work online. She is never without a sketchbook, taking it wherever she goes



Heidi is studying towards an MA at the renowned Cambridge School of Art. She is a member of the Association of Illustrators.

You can find more of Heidi's work here;
https://www.instagram.com/heidi_griffiths_art/



WWW.HEIDIGRIFFITHSART.COM

For any further questions about this event then please do not hesitate to get in touch.

Join Me

